



## BLUE TIT

### WHERE ARE THEY FOUND?

Woodland, hedgerows, parks and gardens.

### WHEN ARE THEY SEEN?

All year round.

### WHAT DO THEY EAT?

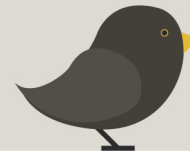
Insects, caterpillars, seeds and nuts.

### LENGTH

11.5cm

### WINGSPAN

17.5-20cm



## BLACKBIRD

### WHERE ARE THEY FOUND?

Gardens, countryside, hills and coasts.

### WHEN ARE THEY SEEN?

All year round.

### WHAT DO THEY EAT?

Insects, worms and berries.

### LENGTH

24-25cm

### WINGSPAN

35-38cm



## HOUSE SPARROW

### WHERE ARE THEY FOUND?

From city centres to the countryside.

### WHEN ARE THEY SEEN?

All year round.

### WHAT DO THEY EAT?

Seeds and scraps.

### LENGTH

14-15cm

### WINGSPAN

24-25cm



## GREAT TIT

### WHERE ARE THEY FOUND?

Woodland, parks and gardens.

### WHEN ARE THEY SEEN?

All year round.

### WHAT DO THEY EAT?

Insects, seeds and nuts.

### LENGTH

14cm

### WINGSPAN

22-25cm



## ROBIN

### WHERE ARE THEY FOUND?

Woodland, hedgerows, parks and gardens.

### WHEN ARE THEY SEEN?

All year round.

### WHAT DO THEY EAT?

Worms, seeds, fruits and insects.

### LENGTH

13-14cm

### WINGSPAN

20-22cm



## WREN

### WHERE ARE THEY FOUND?

Woodland, farmland, heathland and moorland.

### WHEN ARE THEY SEEN?

All year round.

### WHAT DO THEY EAT?

Insects and spiders.

### LENGTH

9-10cm

### WINGSPAN

13-17cm



## BLACKCAP

### WHERE ARE THEY FOUND?

Woodland, parks and gardens.

### WHEN ARE THEY SEEN?

April to October.

### WHAT DO THEY EAT?

Insects and berries.

### LENGTH

13cm

### WINGSPAN

20-23cm



## YELLOW WAGTAIL

### WHERE ARE THEY FOUND?

Lowland grassland.

### WHEN ARE THEY SEEN?

March to September.

### WHAT DO THEY EAT?

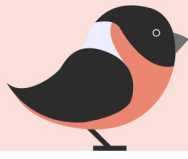
Small insects, including flies and beetles.

### LENGTH

15-16cm

### WINGSPAN

23-27cm



## BULLFINCH

### WHERE ARE THEY FOUND?

Woodland, orchard and hedgerows.

### WHEN ARE THEY SEEN?

All year round.

### WHAT DO THEY EAT?

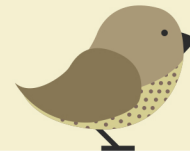
Seeds, buds and insects.

### LENGTH

14-16cm

### WINGSPAN

22-29cm



## SONG THRUSH

### WHERE ARE THEY FOUND?

Woodland, hedgerows, parks and gardens.

### WHEN ARE THEY SEEN?

All year round.

### WHAT DO THEY EAT?

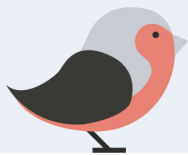
Worms, snails and fruit.

### LENGTH

23cm

### WINGSPAN

33-36cm



## CHAFFINCH

### WHERE ARE THEY FOUND?

Woodland, hedgerows, fields, parks and gardens.

### WHEN ARE THEY SEEN?

All year round.

### WHAT DO THEY EAT?

Insects and seeds.

### LENGTH

14.5cm

### WINGSPAN

24-29cm



## LONG-TAILED TIT

### WHERE ARE THEY FOUND?

Woodland, hedgerows, scrubland and gardens.

### WHEN ARE THEY SEEN?

All year round.

### WHAT DO THEY EAT?

Insects and seeds.

### LENGTH

15cm

### WINGSPAN

17-19cm



## GREENFINCH

### WHERE ARE THEY FOUND?

Woodland, hedgerows, parks and gardens.

### WHEN ARE THEY SEEN?

All year round.

### WHAT DO THEY EAT?

Insects and seeds.

#### LENGTH

15cm

#### WINGSPAN

25-28cm



## GOLDFINCH

### WHERE ARE THEY FOUND?

Shrubland, parks, gardens and orchards.

### WHEN ARE THEY SEEN?

All year round.

### WHAT DO THEY EAT?

Insects and seeds.

#### LENGTH

12cm

#### WINGSPAN

21-25cm



## NUTHATCH

### WHERE ARE THEY FOUND?

Woodland and parks.

### WHEN ARE THEY SEEN?

All year round.

### WHAT DO THEY EAT?

Insects, nuts and seeds.

#### LENGTH

15cm

#### WINGSPAN

20-25cm



## PIED WAGTAIL

### WHERE ARE THEY FOUND?

Woodland, parks, gardens, towns and cities.

### WHEN ARE THEY SEEN?

All year round.

### WHAT DO THEY EAT?

Insects.

#### LENGTH

18cm

#### WINGSPAN

25-30cm



## COAL TIT

**WHERE ARE THEY FOUND?**  
Woodland, parks and gardens.

**WHEN ARE THEY SEEN?**  
All year round.

**WHAT DO THEY EAT?**  
Insects, seeds and nuts.

**LENGTH**  
11.5cm

**WINGSPAN**  
17-21cm



## CHIFFCHAFF

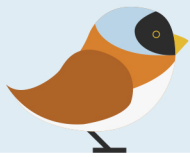
**WHERE ARE THEY FOUND?**  
Woodland, parks and gardens.

**WHEN ARE THEY SEEN?**  
All year round.

**WHAT DO THEY EAT?**  
Insects.

**LENGTH**  
10-11cm

**WINGSPAN**  
15-21cm



## BEARDED TIT

**WHERE ARE THEY FOUND?**  
Reedbeds.

**WHEN ARE THEY SEEN?**  
All year round.

**WHAT DO THEY EAT?**  
Insects, insect larvae, spiders and seeds.

**LENGTH**  
14-15cm

**WINGSPAN**  
17cm



## GOLDCREST

**WHERE ARE THEY FOUND?**  
Pine forests.

**WHEN ARE THEY SEEN?**  
All year round.

**WHAT DO THEY EAT?**  
Spiders and insects.

**LENGTH**  
8-9cm

**WINGSPAN**  
14-15cm